

Introductions

Meet Our Team

Baako Wahabu
DRC Director



Mandy Anderson
Learning Specialist



Meleah Ridd
DRC Coordinator



The Disability Resource Center

We recognize and focus on ABILITIES because we believe every student who works hard deserves a fair chance to succeed.



The Disability Resource Center

DISABILITY
DOES NOT MEAN
INABILITY

Our students do amazing things!

- Graduate
- Excel
- Work
- Inspire

The Disability Resource Center

Our Mission:

We serve students with documented disabilities by providing equal access to academic programs and co-curricular activities and facilities to promote student success, retention, and graduation.

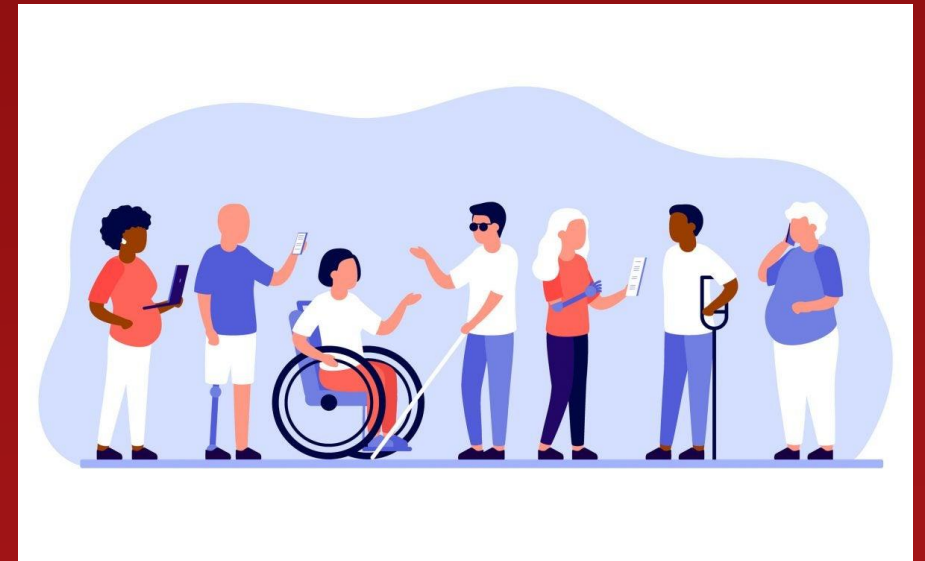


Who Is Eligible?

Students who have a physical or mental impairment that substantially limits one or more major life activities.

(e.g., walking, learning, concentrating, seeing, hearing, communicating).

Have a record of such impairment



Student Responsibility

◆ Self-Identification Is Key

Students must **self-identify** to the Disability Resource Center (DRC) and **request accommodations** in order to receive academic support.

◆ Communication With Professors

Students are responsible for **communicating with their professors** about their accommodations.

If an issue arises about accommodations being met, students should:

1. First speak with the professor to try to resolve the concern.

2. If the issue remains, contact the DRC for support.



Confidentiality Reminder

Students are **not required to disclose disability details** or symptoms to instructors. That information is confidential and managed by the DRC.

SOME DISABILITIES LOOK LIKE THIS



OTHERS LOOK LIKE THIS



NOT ALL DISABILITIES ARE VISIBLE

- Many disabilities—such as ADHD, learning disabilities, mental health conditions, and chronic illnesses—are **invisible** but still valid.
- **We never assume a person's abilities based on appearance.**

Examples of conditions that are considered disabilities

- ADD/ADHD
- Autism
- Learning Disabilities
- TBI
- Psychiatric Disorders
- Diabetes
- Spinal cord injuries
- Depression
- Anxiety Disorder
- Bipolar
- Muscular Dystrophy
- Cerebral Palsy
- Deaf/Hard of Hearing
- Visual Impairments
- Concussion
- PTSD

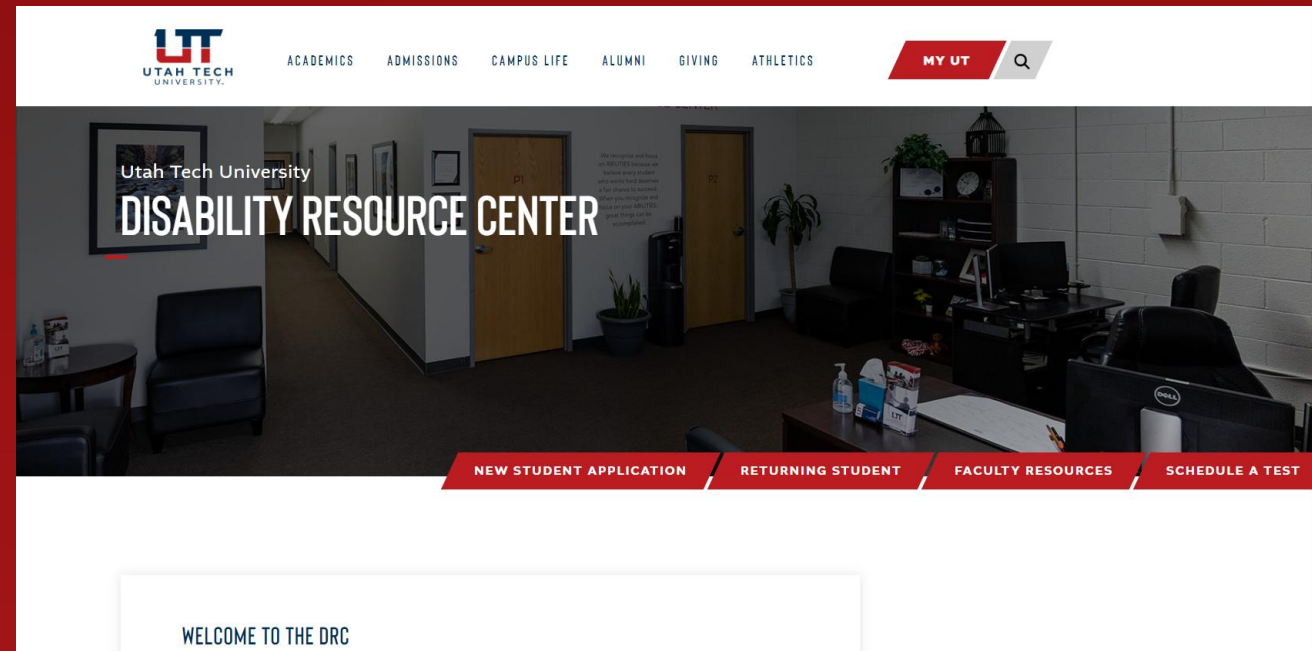
The Application Process

Application Process

Submit a completed application in person or online along with appropriate documentation from a qualified healthcare practitioner.

Guidelines for documentation

Business letterhead outlining diagnosis, limitations, recommended accommodations along with tests/assessments used. IEP or 504.



Examples of Reasonable Accommodations

- Distraction reduced testing environment
- Extended Test Time (time and half)
- Audio Books
- Note-Taking assistance/ use of digital voice recorders in class
- ASL/Transcription Service
- Leniency with tardies
- Reader for exams



Temporary Accommodations

Temporary accommodations are available upon request on case by case basis for:
Concussion, TBI, and Physical injuries such as broken arm. ETC

Accommodations:

- ❖ Note taking assistance and scribe for tests/exams
- ❖ Flexible attendance and due dates as needed, without penalty



The Disability Resource Center

Accommodations Must Be Reasonable:

Under the Americans with Disabilities Act (ADA), accommodations are designed to ensure equal access, **but they must not fundamentally alter the essential elements of a course or program.**



Learning Specialist Support

Everyone registered with the DRC has access to our Learning Specialist in fall and spring semesters.

Topics Mandy Can Help With:

- 🕒 Time Management
- 💡 Study Skills & Test-Taking Strategies
- 🧠 Coping Skills for Academic Stress
- 📄 Notetaking Techniques
- 💻 Navigating Canvas
- 🎧 Finding Alternative Textbooks (e.g., Audiobooks)



Mandy Anderson
Learning Specialist

When Can Eligible Students Request Accommodations?

Anytime during the semester, but accommodations are not retroactive.

Therefore students are encouraged to apply and request accommodations early in the semester.

Legal Obligations



UT is obligated to provide reasonable accommodations to students with documented disabilities who requests and found eligible for accommodations

Accommodating students is a shared responsibility between the student, faculty, and the DRC

Right To Confidentiality

- Information about a student's disability is confidential
- Faculty are not informed of student's disability
- No record of accommodations are noted in transcript or diploma



Current Location and Contact Info:

The DRC is located in the North
Commons Building,

Next to the Testing Center

Phone: 435.652.7516

Regular Hours: 8am to 5pm

Email: drcenter@utahtech.edu

Website: drcenter.utahtech.edu






Starting August 2025.....
we will be in the
Holland building!

August location:

The DRC will be moving to the Holland Building.

The Holland building also houses the library, cashier and tutoring center



A photograph of a mountain range with a field of yellow wildflowers in the foreground. The mountains are rugged and partially covered in snow, set against a blue sky with some clouds. The foreground is a dense field of yellow wildflowers.

**There is a plan and a
purpose, a value to
every life, no matter
what its location, age,
gender or disability.**

Sharron Angle

Questions?

disability
RIGHTS
are human
RIGHTS